

# Tubbataha National Park



Philippine Siren

Diving

**01 Jun  
2027**

**6 nights, ~18 dives**

**07 Jun  
2027**

🕒 12:30 - 13:00

09:00 - 10:00 🕒

⚓ Departure from  
Puerto Princesa

Arrival to ⚓  
Puerto Princesa

Requirements: Min 50 dives, AOWD or equivalent

---

50 logged dives and AOW certification are mandatory requirements

# Price details

## Included

- ✓ Transfer between Puerto Princesa Airport or local hotel and embarkation / disembarkation point.
- ✓ 6 nights full board accommodation based on double occupancy
- ✓ Breakfast, lunch, dinners and snacks
- ✓ Unlimited drinking water, tea, coffee, fruit juice & soft drinks
- ✓ Up to 4 dives per day
- ✓ 11 litre (AL80) cylinder with air fills
- ✓ Weights, weight belt and SMB
- ✓ Disembarkation transfer
- ✓ Embarkation transfer

## Obligatory surcharges

- Diving and travel insurance are mandatory for all guests
- Airport Terminal fees
- Marine, park and port fees

## Extra cost

- Marine, park and port fees may be subject to change, without notice.
- Flights
- Transfers outside of Puerto Princesa
- Nitrox
- Alcoholic beverages
- Laundry

# Price details

## Extra cost

- Massage
- Crew gratuities
- Cabin guarantee
- Courses
- Equipment rental
- Extra services
- Gases

# Program

## Day 1 - Embarkation

- Embarkation is at 13:00 from Baywalk Pier where the Philippine Siren dive tenders will be waiting to transfer you and your luggage to the liveaboard.
- Embarkation is followed by lunch, vessel safety and orientation briefings and mandatory briefings and checks by the Coast Guards and Tubbataha Management Office.
- Once clearance has been approved by the authorities, Philippine Siren will depart from Puerto Princesa Harbour to commence the overnight crossing to Tubbataha Reefs.



## Days 2-3 - North Atoll

Two days diving various sites around Tubbataha North Atoll, typically scheduled as follows:

- Light Breakfast followed by a briefing and Dive 1
- Full Breakfast followed by briefing and Dive 2
- Lunch and relaxation period
- Briefing and Dive 3
- Snacks and relaxation
- Briefing for Sunset dive (no night dives)
- Dinner



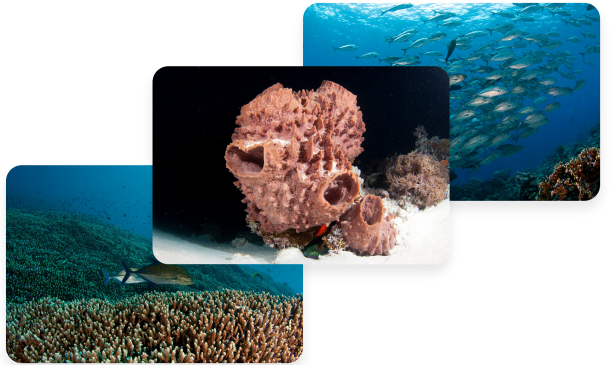
In accordance with Tubbataha Marine Park regulations, dive times are limited to a maximum of 60 minutes, and night dives are not allowed.

# Program

## Days 4-5 - South Atoll

Two days diving various sites around Tubbataha South Atoll, typically scheduled as follows:

- Light Breakfast followed by a briefing and Dive 1
- Full Breakfast and relaxation period followed by briefing and Dive 2
- Lunch and relaxation period followed by briefing and Dive 3
- Snacks and relaxation
- Briefing for Sunset dive (no night dives)
- Dinner



In accordance with Tubbataha Marine Park regulations, dive times are limited to a maximum of 60 minutes, and night dives are not allowed.

# Program

## Day 6 - Jessie Beazley Reef

Two morning diving at Jessie Beazley Reef before commencing the cruise back to Puerto Princesa, typically scheduled as follows:

- Light Breakfast followed by a briefing and Dive 1
- Full Breakfast and relaxation period followed by briefing and Dive 2
- Lunch and relaxation
- Snacks and relaxation
- Dinner
- Overnight cruising to Puerto Princesa



## Day 7 - Disembarkation

- Breakfast on board, followed by disembarkation at 09:30.
- Our dive tenders will transfer you from the liveaboard to Baywalk Pier where taxis will be waiting to transfer you to Puerto Princesa Airport, or your hotel.